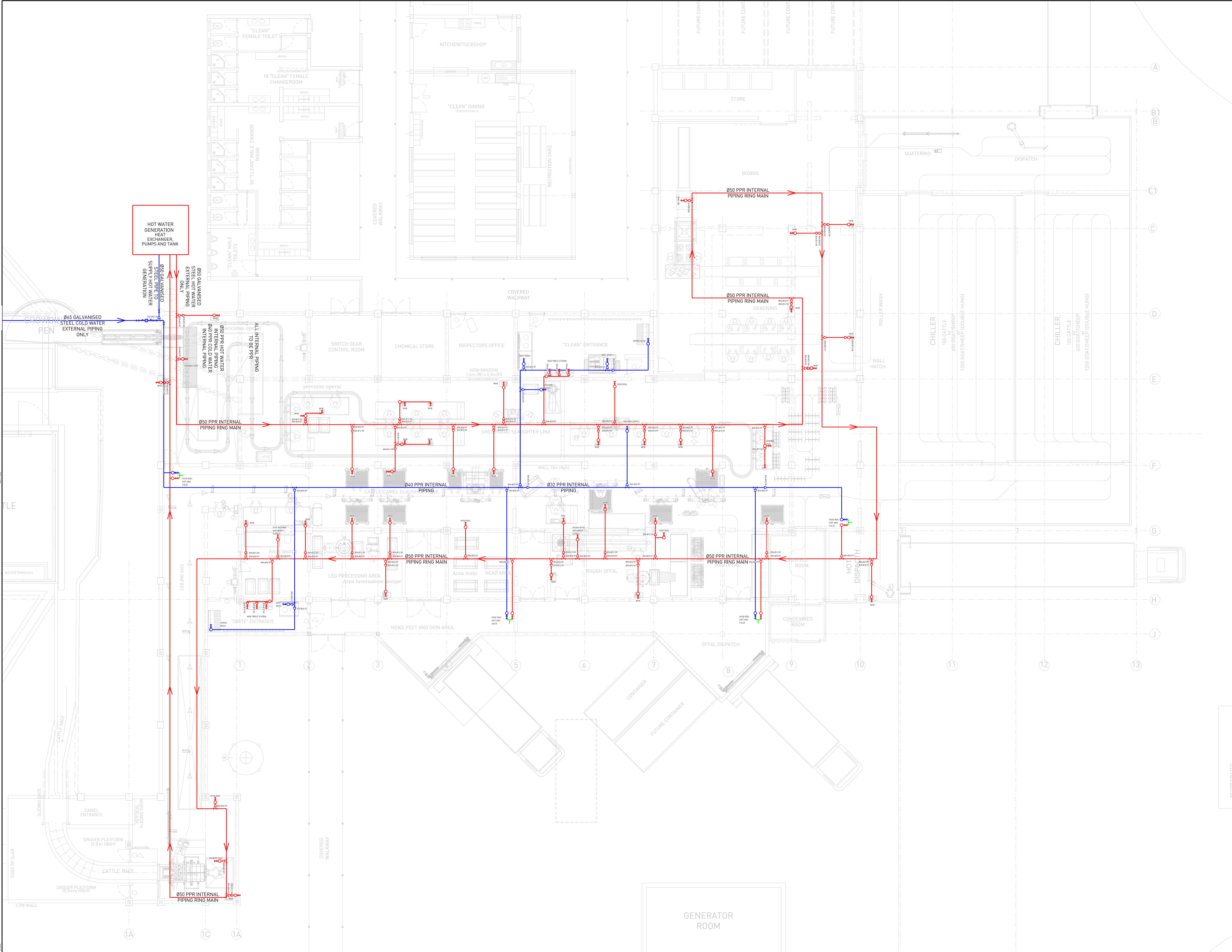




NOTES:
 -ALL VALVES TO BE FULL BORE
 -DRAWING TO BE USED AS SCHEMATIC ONLY. LOCATION OF VALVES, FITTINGS AND PIPING TO SUIT CONDITIONS ON SITE
 -PPR PIPING TO BE POSITIONED INSIDE CEILING ABOVE FACTORY FLOOR
 -STAINLESS STEEL PIPING TO BE USED AS DROPPERS TO SUPPLY ALL FIXTURES ON FACTORY FLOOR
 -25mm AIR RELEASE VALVES TO BE PLACED AT HIGH POINTS, 150mm ABOVE HORIZONTAL PIPING
 -GALVANISED STEEL PIPING TO BE MEDIUM DUTY/CLASS
 -PPR AND HDPE PIPING TO BE PRESSURE RATED AT PN16 OR ABOVE

LEGEND:
 — MIXED WATER (HOT AND COLD)
 — COLD WATER
 — HOT WATER (=48 DEGREES CELSIUS)

- ▷ STRAIGHT REDUCER (SRI)
- ⊕ REDUCING TEE (RT)
- ⊗ BALL VALVE
- PIPE VERTICAL DROP POINT
- ⊗ PRESSURE REDUCING VALVE
- FLOW DIRECTION
- ⊥ Y STRAINER
- ⊡ WATER METER



A	03-02-2023	ISSUED FOR TENDER	NN
NO.	DATE	REVISION	NN

SCIP ENGINEERING GROUP
 JOHANNESBURG
 WITBANK
 IN PARTNERSHIP WITH:
WV
 VAN VLIET DE WET & PARTNERS

PO Box 48550
 Roosevelt Park, 2129
 Johannesburg
 Gauteng

Tel: 011 888 1425
 Fax: 011 888 1075
 joburg@scip.co.za
 www.scip.co.za

CLIENT
KENYA CLIMATE SMART AGRICULTURE PROJECT
ISILOLO COUNTY

PROJECT
ISILOLO ABATTOIR

DESCRIPTION
WATER PIPE LAYOUT

DESIGNED	NN	SCALE	1:100	PAPER SIZE	A1
DRAWN	GM	DATE	DECEMBER 2022		
CHECKED	-	<input type="radio"/> CONCEPT DRAWING <input type="radio"/> TENDER DRAWING <input type="radio"/> CONSTRUCTION DRAWING <input checked="" type="radio"/> AS BUILT DRAWING			
SIGNED	DRAWING STATUS				
DRAWING No.	1898-C4-01			REVISION	A